

ทุน ISPF เพื่อส่งเสริมระบบนิเวศวิจัย

สัมมนาออนไลน์เจาะลึกรายละเอียดและวิธีการสมัครทุน
วันที่ 14 สิงหาคม 2567



International Science Partnerships Fund

International Research Empowerment Programme (IREP)

Information session for Thai applicants

Overview



International Science Partnership Funds (ISPF)



Department for
Science, Innovation,
& Technology



ISPF



The International Science Partnerships Fund was set up by the UK's Department for Science, Innovation and Technology to support strategic research partnerships between the UK and other countries. Through the fund, UK research and innovation bodies can apply for calls and opportunities around four major global themes: planet, health, technology and talent.



Overview

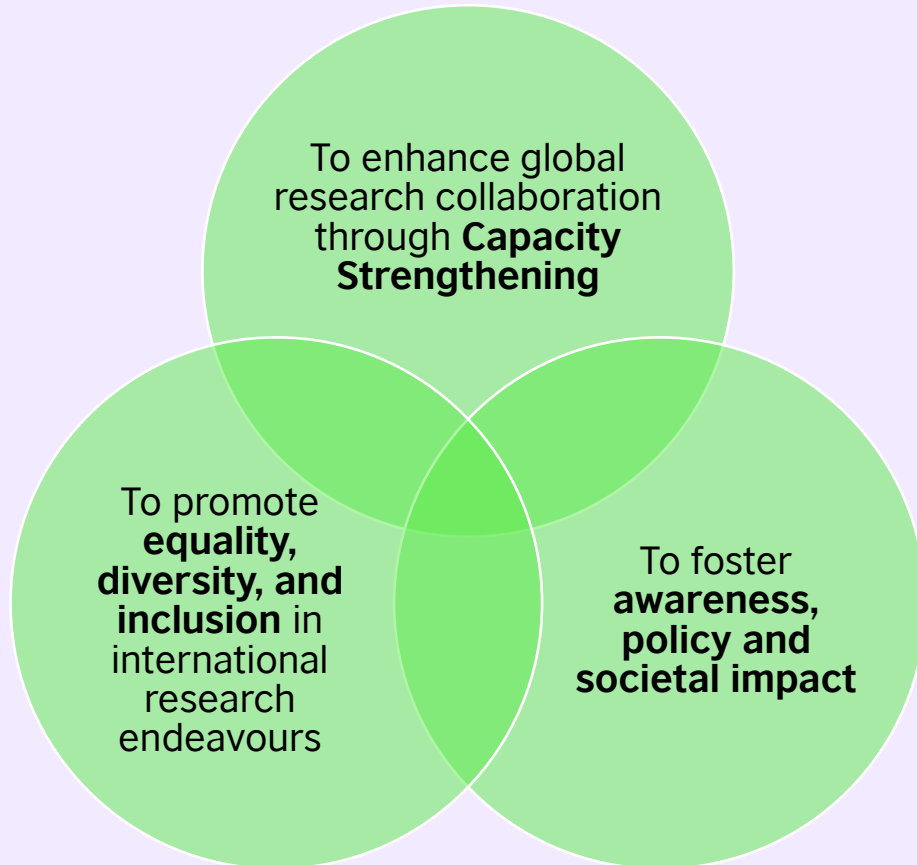
International Research Empowerment Programme (IREP) is not aimed at funding research programmes; rather, it serves as a catalyst for enhancing and enabling better global research and collaboration environment.

With a primary focus on **capacity strengthening**, this IREP seeks to empower **researchers, research managers, and institutions** to forge impactful partnerships, facilitate dialogue, and drive inclusive research and innovation across borders.

Through targeted initiatives and strategic priorities, IREP aims to strengthen the foundations of global research ecosystems and cultivate a culture of inclusion, collaboration, and excellence.

International Research Empowerment Programme (IREP)

Objectives



Priorities

Priority 1

Foster **better engagement and management practices** in international research collaboration

Priority 2

Support **equality, diversity and inclusion** in international research endeavours.

Priority 3

Promote capacity building and knowledge exchange in **interdisciplinary research**

Priority 4

Create opportunities for researchers and institutions to **engage with communities, policymakers** and **translate research into societal benefits**

Priorities

Priority 1: Foster better engagement and management practices in international research collaboration

Proposals are encouraged to enhance the global research collaboration by facilitating knowledge exchange of best practices, promoting better engagement and management in international research collaboration.

Activities may include organising workshops, webinars, or conferences where researchers and research office staff can discuss best practices, share experiences, and develop strategies for effective international research collaboration with a focus on ethical research practices, transparency, accountability, and due diligence ensuring data integrity, intellectual property management, respect for human subjects, and adherence to ethical standards throughout the research process

Priorities

Priority 2: Support equality, diversity and inclusion in international research endeavours.

Proposals are encouraged to actively support equality, diversity, and inclusion in international research endeavours.

This may involve implementing measures to ensure equitable access to opportunities, resources, and support for researchers from underrepresented/disadvantaged backgrounds. For example, funding may be allocated to support initiatives that promote gender equality in research, enhance the participation of people from disadvantaged or underrepresented backgrounds, or address barriers faced by researchers from these background.

This may also include conducting research and analysis or producing knowledge for the international community around this priority.

Priorities

Priority 3: Promote capacity building and knowledge exchange in interdisciplinary research

Proposals are encouraged to support initiatives that promote capacity building in interdisciplinary research.

This could involve supporting interdisciplinary research training, workshops, or mentorship initiatives aimed at fostering collaboration between researchers from different disciplines. Additionally, funding may be allocated to support the development of interdisciplinary research networks where researchers can share expertise and collaborate on innovative projects to address complex challenges.

Priorities

Priority 4: Create opportunities for researchers and institutions to engage with communities, policymakers and translate research into societal benefits

Proposals that focus on creating opportunities for universities and institutions in the UK and partner countries to engage with communities, policymakers, and translate research into societal benefits, are encouraged.

Activities may include organising public engagement events, community outreach programmes, or policy briefings to ensure that research findings are accessible and relevant to diverse audiences.

Granting and timeline

4-5



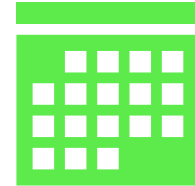
number of projects in a country

80,000



maximum value of each project

12-18



duration of each project in months

Call opens

• 26 July 2024

Outcome of selection

• January 2025

Deadline for application

• 6 October 2024, 12:00 mid-day BST

Project start dates

• March 2025

Eligibility and funding (required by the British Council)

Project Leaders and Organisations

One Project Leader from the UK and one Project Leader from the Partner Country/Territory

Must only submit one application under this call

Not for-profit higher education institutions or publicly funded research organisations **are eligible** to apply as Lead Institutions

Eligible funding

Direct staffing costs limited to 30%

Expertise cost limited to 20%

Networking, workshop and other event-related costs

Travel and related expenses

Eligibility and funding (required by the British Council)

Ineligible funding

Purchasing of assets and equipment



Studentship



Patent costs



Costs related to writing up, promoting or disseminating previous research



Premium class tickets



Entertainment cost



Exceptional cost

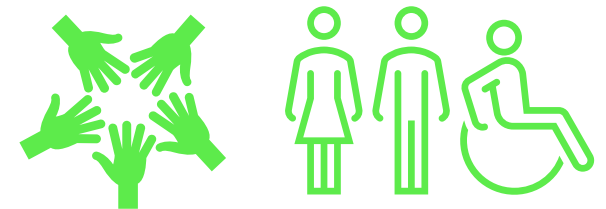
Applicants can request a grant contribution for tackling barriers to diversity and inclusion.

Examples of costs that can be covered include but are not limited to additional

- childcare costs,
- measures to support the participation of researchers and team members with disabilities.

Such requests should be clearly marked in the budget form under Exceptions and should be supported by justifications submitted separately by email to

ISPF-IREP@britishcouncil.org .



Application questions (non-exhaustive)

- The collaboration (roles and contributions of each party and how to manage the communications)
- Contexts, Objectives and Monitoring, Evaluation and Learning
- Sustainability
- Research Governance and Ethics
- Safeguarding
- *Applications must have been completed in English*

Supporting documents (required by the British Council)

CVs

One Project Leader from the UK and one Project Leader from the Partner Country/Territory

Up to two sides of A4 each

Letter of Support

One from the UK and one from the Partner Country/Territory

On headed paper and dated within 3 months of submission

Must not be signed by the Project Leaders

Gantt Chart

Showing timelines for the project with reference to the start and end dates indicated

Optional documents

Risk assessment for Travel

Associated Partners

Official Development Assistance and Gender Equality Statement

Official Development Assistance (ODA)

To be ODA-eligible, the OECD states that research projects should be directly and primarily related to the problems of developing countries.

Please consider the economic development and social welfare impact of your work, including how it is conducted as well as the outputs and potential outcomes.

Including relevant Sustainable Development Goals (SDGs) is encouraged and can help frame ODA relevance.

ODA funding cannot be used for military, security, or dual use projects.

Gender Equality Statement (GES)

All applicants are expected to submit a GES as part of their grant application.

Applicants must outline how they have taken *meaningful yet proportionate* consideration as to how their proposed project will contribute to reducing gender inequalities, as required under the International Development (Gender Equality) Act 2014.

Proportionate and meaningful means that applicants should think of gender and potential gender issues in a way which corresponds in *size, scale* and *impact* of their project. Their answers should have meaning and be serious, important and/or worthwhile.

The GES should be about the project specifically – the outputs and outcomes, the make-up of the project team, participants, stakeholders and beneficiaries of the project, and the processes followed throughout the research programme.

The British Council reserves the right to reject a proposal where the GES has not been sufficiently considered.

In partnership with



International Research Empowerment Programme (IREP)

Additional criteria from partner

Take your time to study the guideline before apply

- UK Lead Applicant submit application through our portal at <https://grants.britishcouncil.org/>
 - Applicants need to register at the website before applying.
 - Once submitted, the application can be edited at any time before the deadline (6 October 12:00 PM UK BST time)
 - You will be asked to select one Thai funder you would like to apply for.
 - All the required documents must be attached with the correct file name in the portal
 - Carefully read through the correct forms and format of these documents (Resume, Letter of Support and Risk assessment for Travel and etc.)
- Thai applicant may need to submit proposal parallelly through NRIIS, depending on the Thai funder
 - Carefully check our application guideline, especially the appendices at the end for each Thai partner's additional requirement.
 - In case of dual-application process, both applications must be submitted by the deadline.



Q&A

- Can I apply as an individual ?
- Can a medical doctor in the university hospital who is not a full-time lecturer at the university apply for these grants?
- Does this call open to all research areas?
- Is this a research project or something like a workshop activity?
- What is the submission process of each side ? Is there any specific forms that require applicants to fill in apart from an application form- such as CV or any risk assessment forms?

Contact us at the British Council



ISPF-IREP@britishcouncil.org



[@HEGoingGlobal](https://twitter.com/HEGoingGlobal)



<https://www.facebook.com/britishcouncil>



<https://www.linkedin.com/company/british-council>

Feedback Form Information
Session - ISPF International
Research Empowerment



<https://forms.office.com/e/ZtZHkFnXH5>